

# INVESTMENT OPPORTUNITY



## THE CENTURION APARTMENTS, CORVALLIS

### PROPERTY SUMMARY

**Address:** 275-279 SE Lilly Ave  
Corvallis, OR 97333

**Price:** \$3,045,000

**Units:** 26

**Type:** 1 bed, 1 bath

**Unit size:** +/- 465 SF

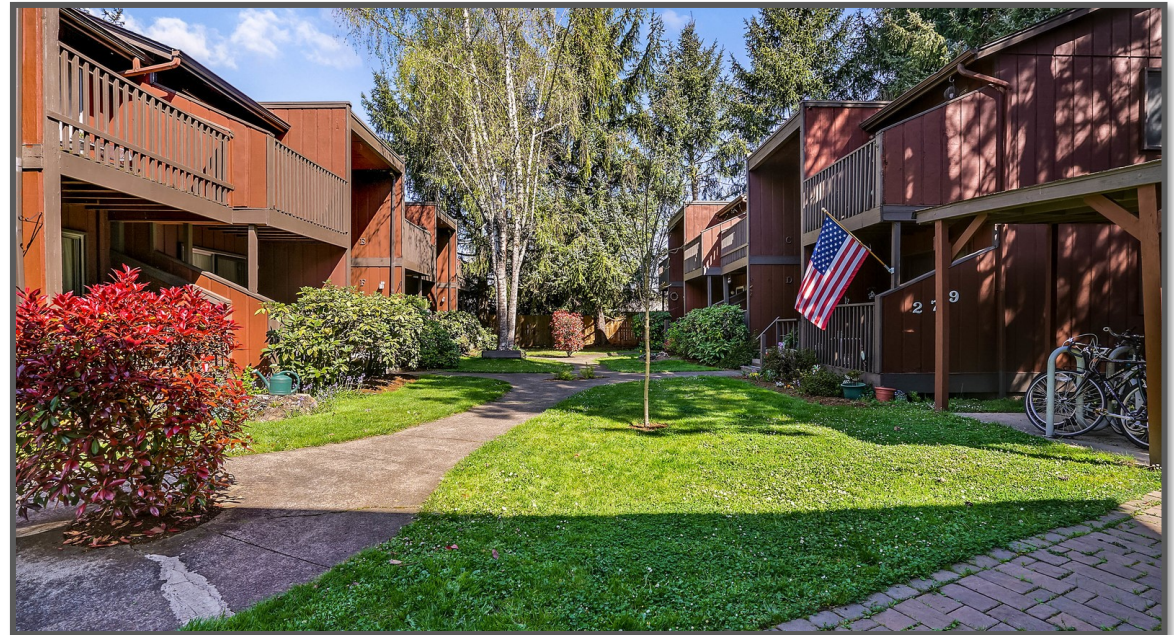
**Building:** 13,098 SF

**Year built:** 1978

**Zoning:** RS-12 Medium Density  
Residential

**CAP Rate:** 5.37%

**Sales price per unit:** \$117,115



The Centurion Apartments in Corvallis are a well-maintained complex with 26 - one bed, one bath units (+/- 465 SF). Located 1.6 miles from the OSU Admin building (15 min bike ride). They have boasted 100% occupancy over the past decade. Dedicated parking spot for each unit. Onsite laundry facility. Locking mailboxes. Covered bike rack. Great upside!

CONTACT

Shelley Henderson 503.881.7399  
Principal Broker  
Licensed in the State of Oregon  
shelley@copperrockrealty.com

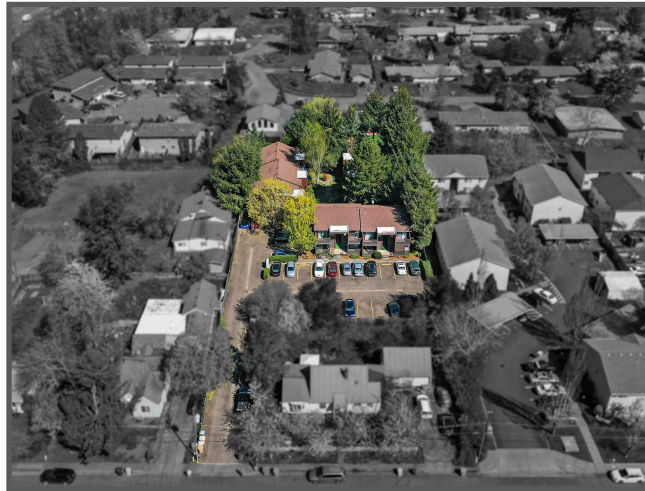


The information contained here in was compiled from data furnished by the property owner and/or other sources deemed reliable; however, accuracy is not guaranteed.

[www.CopperRockRealty.com](http://www.CopperRockRealty.com)

# INVESTMENT OPPORTUNITY

## THE CENTURION APARTMENTS, CORVALLIS



CONTACT

Shelley Henderson  
Principal Broker  
Licensed in the State of Oregon

503.881.7399  
shelley@copperrockrealty.com



[www.CopperRockRealty.com](http://www.CopperRockRealty.com)

The information contained here in was compiled from data furnished by the property owner and/or other sources deemed reliable; however, accuracy is not guaranteed.

# INVESTMENT OPPORTUNITY

## THE CENTURION APARTMENTS, CORVALLIS



CONTACT

Shelley Henderson  
Principal Broker  
Licensed in the State of Oregon

503.881.7399  
shelley@copperrockrealty.com



The information contained here in was compiled from data furnished by the property owner and/or other sources deemed reliable; however, accuracy is not guaranteed.

[www.CopperRockRealty.com](http://www.CopperRockRealty.com)